



# **Vbrick Encoder**

vbrick encoder v4.9

Presenter Mode User Guide



---

## Copyright

© 2019 Vbrick (d/b/a Vbrick), all rights reserved.

This publication contains confidential, proprietary and trade secret information. No part of this document may be copied, altered or shared without prior written permission from Vbrick. This document is subject to change without notice. Vbrick, the Vbrick logo, Rev, and all Vbrick products are trademarks of Vbrick. All other trademarks are the property of their respective owners.

## FCC Part 15

This equipment has been tested and found to comply with the limits for Class A digital device, pursuant to Part 15 of the FCC rules, Class A for OC-3C Interface, Class A for the SDI Interface. These limits are designed to provide reasonable protection against harmful interference when the equipment is operated in a commercial environment. This equipment generates, uses, and can radiate radio frequency energy and, if not installed and used in accordance with the instruction manual, may cause harmful interference to radio communications. Operation of this equipment in a residential area is likely to cause harmful interference in which case the user will be required to correct the interference at their own expense. This Class A digital apparatus meets all requirements of the Canadian Interference-Causing Equipment Regulations. Cet appareil numérique de la Classe A respecte toutes les exigences du règlement sur le matériel brouilleur du Canada.



Vbrick declares that this product conforms to the following certificate standards for electromagnetic emissions when installed according to the manufacturer's specifications: EN 55022:2006; EN 55024:1998, A1:2001, A2:2003; EN 61000-3-2:2005; EN 61000-3-3:1995, A1:2001, A2:2005.

---

# Contents

## Presenter Mode User Guide

Welcome .....v  
Chapter and Topic Organization.....v

### 1. Presenter Mode Features

Presenter Mode Overview .....1  
    Presenter Mode Login.....1  
Manage an Event .....2  
    Select a Layout .....2  
    Configure a Layout .....4  
Control a Presentation.....6  
    Start and Stop an Event .....7  
    Broadcast an Event.....7  
    Record an Event .....8  
Advanced Status Messages.....8

---

# Presenter Mode User Guide

## Welcome

This document explains how to use the Vbrick 9000 encoder when in Presenter Mode. Presenter Mode requires the use of a Presenter encoder or enabling of Presenter Mode features on a standard encoder.

**Note:** When viewing the images in Online help, keep in mind that many of the configuration options for the encoder are mutually exclusive. This means that, depending on which options you select, you may see new fields or you may not see previously existing fields. Although the images may not always show all options, they are fully explained in the text.

## Chapter and Topic Organization

This Online help system provides access to the Vbrick 9000 Presenter Mode Encoder documentation. Topics may be used as reference material or as how-to materials for specific use cases.

For best results, please take a few moments to familiarize yourself with the way the information is organized. If you find errors or omissions, click the e-mail icon in the upper-right corner of this window or send your feedback to [documentation@vbrick.com](mailto:documentation@vbrick.com)

<a href="#"><u>Presenter Mode Overview</u></a>	Provides an overview of Presenter Mode features and functionality.
<a href="#"><u>Manage an Event</u></a>	Topics that detail how to manage an event including selecting a layout, configuring a layout, and controlling a Webcast presentation.
<a href="#"><u>Control a Presentation</u></a>	More detailed topics on Webcast presentations and how to understand status bar messages.
<a href="#"><u>Advanced Status Messages</u></a>	These topics describe available status messages for troubleshooting.

## Presenter Mode Features

### Presenter Mode Overview

Presentation features support the ability for you to stream video and Webcasts directly from an encoder using an intuitive Presenter Mode interface. Presenter Mode is based on layouts defined by an account admin which are covered in the [Presentation Features](#) topic of the [Vbrick Encoder v4.9 Admin Guide](#).

When streaming, you may dynamically switch between layouts and video/network inputs without interruption to the video stream and without the need to restart the player. Layout configuration values may also be seamlessly switched as well including the background color and image, borders, and margins. This provides the ability to create very compelling video Webcasts. Note: These seamless transitions do not apply to changing encoding values within VAdmin.

This guide covers how to use Presenter Mode to run a presentation that has been previously configured by an admin. As noted, how to configure the layouts and set up used in this guide is covered in the [Presentation Features](#) topic of the [Vbrick Encoder v4.9 Admin Guide](#).



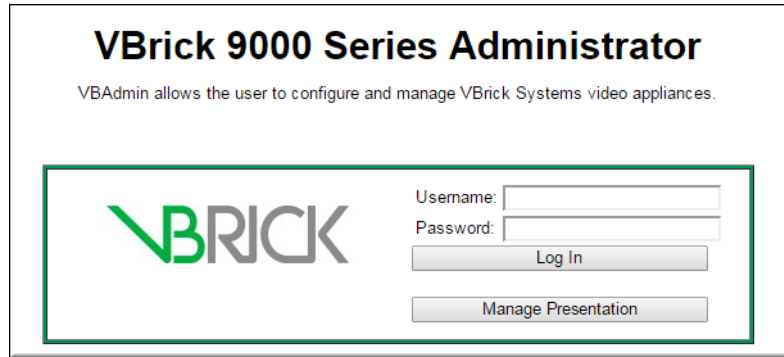
This user guide covers the following topics:

- How to choose and modify a layout for your presentation
- How to start a presentation
- How to broadcast a presentation
- How to record a presentation

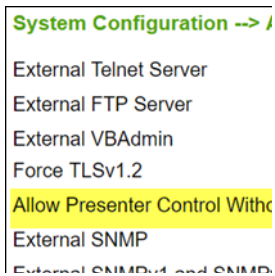
**Note:** The presentation features discussed in this topic are applicable to the Presenter encoders (number p/n 9311-1612-100) and any 9000 that has the Presenter Mode enabled (System Configuration > General > [Additional System Settings](#) for enabling Presenter Mode). As a reminder, not all encoders may use Presenter Mode.

### Presenter Mode Login

If enabled by an admin, the **Manage Presentation** button will appear on the Login screen which will enable you to go directly to Presenter Mode without the need to log in to VAdmin first.



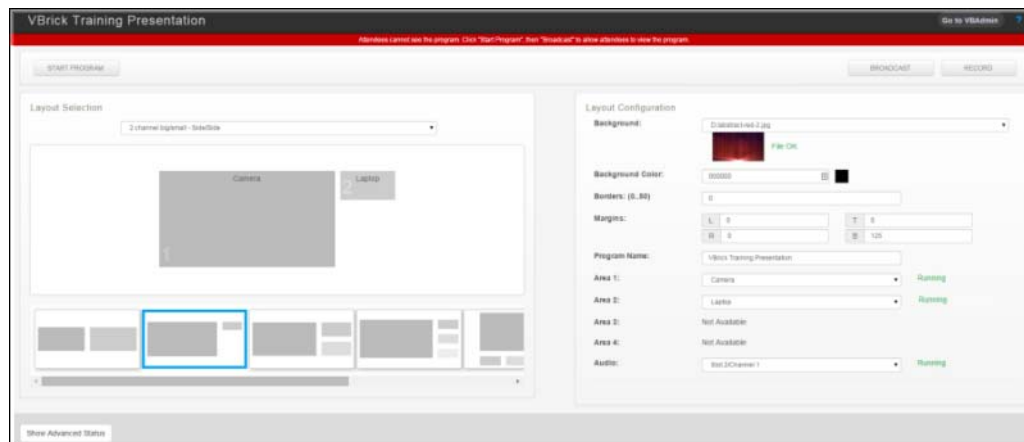
If this button has not been enabled, logging in to VAdmin will be required first to enter Presenter Mode. You may then click the **Manage Presentation** button at the top of the left navigation menu to access Presenter Mode.



## Manage an Event

There are three steps to managing an event in Presenter Mode:

1. Select a layout(s)
2. Configure a layout(s)
3. Control your event/presentation

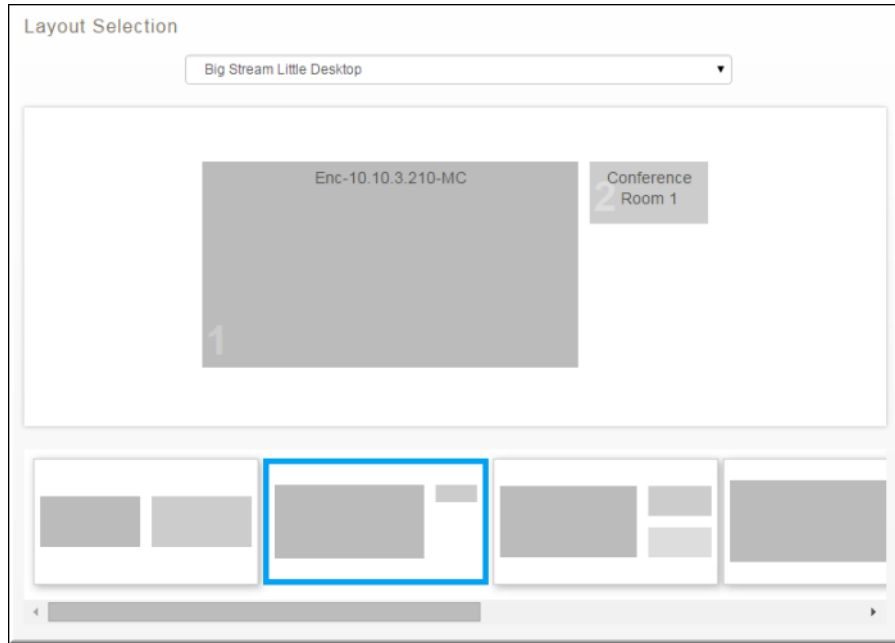


### Select a Layout

Your admin has enabled and configured up to seven layouts with default video or network sources and layout (color/border/margin/background image) configurations that you may choose to use for your presentation.

Select a layout from the **Layout Selection** area and click the **Apply** button. You may then set your own values for the selected layout in the **Layout Configuration** area if you want to change the default values your admin has selected.

**Tip:** Keep in mind that layouts and their configuration values may be switched when streaming without interruption to the video or layout and without the need for the audience to restart their players. This provides the ability to create very compelling video Webcasts.



Field	Description
Choose Layout	<p>Select from the layouts your admin has enabled for use in your presentation. If a layout is selected here, it is also selected in the Layout Scroll bar below the Layout Preview box. If you do not see a layout that you need, contact your admin to have it enabled.</p> <ul style="list-style-type: none"> <li>Single area layout with the selected video input filling the entire video image.</li> <li>Two area layout with each area approximately the same size, displayed side by side.</li> <li>Two area layout with one large area and a smaller area in the upper right. This is ideal for a single computer screen capture with live video of the presenter.</li> <li>Three area layout with one large area on the left and two smaller areas on the right. This is ideal for a single computer screen capture with two live videos.</li> <li>Four area layout with one large area on the left and three smaller areas on the right.</li> <li>Four area layout with one large area on the left and three smaller areas below.</li> <li>Four area layout with areas arranged in a 2x2 grid.</li> </ul>

Field	Description
Layout Preview	Displays the currently selected layout in visual format. Each layout has predefined, unchangeable video areas. Other items in the layout are configurable such as background colors and borders and what video sources are mapped to what areas. You admin has likely given the video areas a descriptive name such as “Camera 1”, “Laptop”, or “Document Camera” so that you will understand what video will be visible in each area of the layout.
Layout Scroll	Functions the same as the Choose Layout dropdown and selects a layout to use and set default values for when in Presenter Mode. If a layout is selected here, it is also selected in the Choose Layout dropdown.

## Configure a Layout

Once you have selected a layout in the **Layout Selection** area, you may choose to use the default values selected for it by your admin, or define your own values in the **Layout Configuration** section. You must click the **Apply** button to save any changes you make.

Field	Description
Background	If a background image has been uploaded, it may be selected through the <b>Background</b> drop-down to be added to the layout. The current background color may be selected as well by selecting <b>Use Background Color</b> . Upload background images by navigating to Encoder Configuration > <a href="#">Manage Layout Images</a> .
Background Color	Only solid background colors (or Hexadecimal values) may be selected. To select a background color, click on the colored square to activate a color chooser and either select the desired color or enter the Hex value for that color.



Field	Description
Borders	A border value 0-50 may be selected with the default set at 0. If a border is applied, it will be applied to all video areas in the selected layout. Video will be scaled down to fit the border with no video lost due to border size. It should be noted that borders are used in Presenter Mode to control spacing between video areas and the background color appears in the border area. Borders are not used to frame video areas.
Margins	Margins are useful when inserting branding. Margins are different from borders in that borders are applied to all video source areas whereas the margins define the layout area itself. Margins are specified in pixels.
Program Name	Modifies the title of the Presentation.
Video Area Mapping	<p>Each area in the layout you have selected is assigned a video input channel. Only the channel is mapped, not the specific input type. For example, channel 1 is mapped, not channel 1 VGA. You may remap each video/audio area as needed. Note the status of each area is noted to the side of the area.</p> <p>In addition to video sources, network sources may also be selected here. However, unlike video sources, only one network source may be mapped at a time so if you have a network source selected and you choose another in a different area, the first network source will be disabled.</p> <p>The caveats below should be kept in mind when switching between sources.</p> <p>If you use an encrypted network source and switch to another encrypted network source:</p> <ul style="list-style-type: none"> <li>• Seamless switching between the two sources occurs if both have the same encryption.</li> <li>• Seamless switching between the two sources does <i>not</i> occur if different encryption methods exist between them or if one is encrypted and other is not.</li> </ul> <p>If you switch between a video source and a network source:</p> <ul style="list-style-type: none"> <li>• If the network source requires decryption, the switch between video and network sources is seamless between the local video input and the decrypted stream.</li> <li>• However, if the video source is playing first, the first time the encrypted network source is selected, the switch is not seamless. Every switch thereafter, is seamless.</li> </ul>

Field	Description
Audio Mapping	<p>Similar to video area mapping with the exception that only one audio channel source is selectable for each layout.</p> <p>Further, in order to switch audio channels within a presentation and <i>not</i> reset the stream, all audio channels <i>must</i> have the same sampling rate and audio rate settings. The easiest way to assure this, and a best practice, is to create the desired audio configuration for one channel and then use the <b>Clone</b> button to copy the <b>Audio Rate</b> settings to other audio channels. After cloning, you can then manually configure the setting for <b>How Audio is Connected</b> for each channel if you have a mixture of analog and digital audio sources.</p> <p>You may still change audio channels with different settings, but this will cause a reset of the stream and attendees/viewers may need to reset their players as a result.</p> <p>Note: Changing audio channels during a presentation is <i>not</i> supported for streams with encryption.</p>
Revert/Apply Buttons	Click Apply to apply any changes you have made to the layout. Click Revert to discard any changes you have made.

**Tip:** Keep in mind that you may switch seamlessly between layouts, configurations, and video inputs when presenting. (Some caveats apply, see the table above with regard to Video Area Mapping) As a result, consider a best practice of making border values, margin values, pause images, and so forth consistent between layouts so you do not have any odd jumps or glitches when switching between layouts during a presentation.

## Control a Presentation

The Presenter has three methods to controlling a presentation. They are:

- Event start/stop
- Broadcast an event
- Record an event

After selecting and configuring your layout, click **Start Program** to begin streaming. The stream will then be available on your network with a graphic displaying the pause message “The host is not currently broadcasting.”

The image displayed during pauses may be changed by your admin in the **Pause Image** dropdown field by navigating to **Encoder Configuration > Manage Layout Images**.

The status bar will change color from red to orange to indicate that you are now streaming but viewers cannot see your content or hear any audio.

Attendees can see a paused image only. Click "Broadcast" to allow attendees to view live video.

When are ready to go live with your video, click **Broadcast**. The status bar will turn green and your video will begin streaming using the layout you have selected.

Attendees can see the program. You are broadcasting live to your audience.

If you'd like to record your presentation, click **Record**. You will be alerted that you are also recording your presentation.

Attendees can see the program. You are broadcasting live to your audience and recording.

At any time during the event, you can mute audio and resend the paused image by clicking the **Broadcasting** button. You may also stop/restart recording by clicking the **Recording** button.

The program and recording are paused. Click "Broadcast" to allow attendees to view live video.

When you are finished with your event, click **End Program** to shut down the stream and end the recording.

Attendees cannot see the program. Click "Start Program", then "Broadcast" to allow attendees to view the program.

Each control state is summarized below along with **Advanced Status** messages.

## Start and Stop an Event

▼ To start an event:

1. Click the **Start Program** button. It will change to an **End Program** button.
2. To stop the event, click the **End Program** button.

When an event has started and Broadcast is *off*, the following occurs:

- Audio is muted
- Video is replaced with a static pause image.
- Transmitters and Servers will continue to stream the pause image. Connected players and servers must not close.
- If Record is *on*, it will be paused. The Archiver will stop writing to the current file. The file will be left open.

## Broadcast an Event

▼ To broadcast an event:

1. Click the **Broadcast** button. It will turn green and display Broadcasting.
2. To stop broadcasting the event, click the **Broadcasting** button.

When an event has started and Broadcast is *on*, the following occurs:

- Audio and Video play as configured
- You may switch the layout at any time and transition will occur seamlessly without the need to restart the broadcast so long as the layout has been previously configured correctly.
- If Record is *on*, the Archiver will resume recording at the next I frame. Timestamps will be adjusted so the paused portion will be seamlessly skipped by the player

---

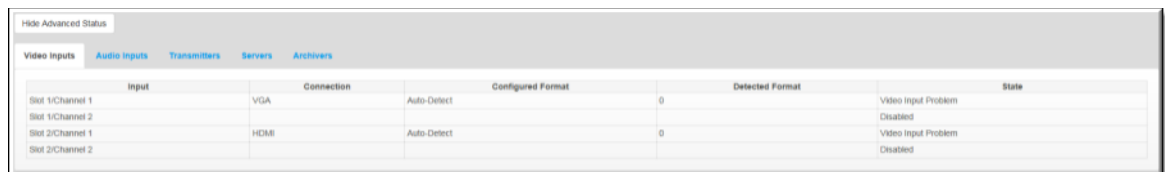
## Record an Event

- ▼ To record an event:
  1. Click the **Record** button. It will turn red and display Recording. You must be broadcasting to record the event.
  2. To stop recording the event, click the **Recording** button.

## Advanced Status Messages

If you receive a message that prompts you to check **Advanced Status**, you will likely need to contact your encoder admin for support on troubleshooting your presentation or video broadcast.

Advanced Status may be checked by clicking the **Show Advanced Status** button (**Hide Advanced Status** when it is open) at the bottom of your Presenter Mode window and may be used by your admin to diagnose presentation issues.



The screenshot shows a window titled "Hide Advanced Status" with a tabbed interface. The "Video Inputs" tab is selected. Below the tabs is a table with the following columns: Input, Connection, Configured Format, Detected Format, and State. The table contains four rows of data:

Input	Connection	Configured Format	Detected Format	State
Stat 1Channel 1	VGA	Auto-Detect	0	Video Input Problem
Stat 1Channel 2				Disabled
Stat 2Channel 1	HDMI	Auto-Detect	0	Video Input Problem
Stat 2Channel 2				Disabled

Some messages that may be received (and their corresponding color bar) that you may need to report to your admin are as follows:

**GREEN:**

Attendees can see the program. You are broadcasting live to your audience, but not recording. Check advanced status "Archivers".

**RED:**

Program is started, but not broadcasting or recording. Check advanced status.

**RED:**

Program is started, but not broadcasting. Check advanced status.

**RED:**

The program is paused, but cannot be seen by attendees. Check advanced status.

**ORANGE:**

The program is paused and recording is stopped. Click "Broadcast" to allow attendees to view live video.