

VBCorpCast

VBrick Systems

VBCorpCast v1.1 Webcast Kit Quick Start Guide



VBrick Systems, Inc.
12 Beaumont Road
Wallingford, Connecticut 06492, USA

March 28, 2006
4410-0182-0000

Copyright

© 2006 VBrick Systems, Inc. All rights reserved.
12 Beaumont Road
Wallingford, Connecticut 06492, USA
www.VBrick.com

This publication contains confidential, proprietary, and trade secret information. No part of this document may be copied, photocopied, reproduced, translated, or reduced to any machine-readable or electronic format without prior written permission from VBrick. Information in this document is subject to change without notice and VBrick Systems assumes no responsibility or liability for any errors or inaccuracies. VBrick, VBrick Systems, the VBrick logo, StreamPlayer, and StreamPlayer Plus are trademarks or registered trademarks in the United States and other countries. Windows Media is a trademarked name of Microsoft Corporation in the United States and other countries. All other products or services mentioned in this document are identified by the trademarks, service marks, or product names as designated by the companies who market those products. Inquiries should be made directly to those companies. This document may also have links to third-party web pages that are beyond the control of VBrick. Use these links at your own risk. The use of such links does not imply that VBrick endorses or recommends the content of any third-party web pages. Some VBrick products use open source software provided by third parties. VBrick supports the Open Source Initiative (OSI) and this source code is freely available at <http://www.vbrick.com/opensource>.

About VBrick Systems

Founded in 1997, VBrick Systems, an ISO 9001 certified vendor, is a privately held company that has enjoyed rapid growth by helping our customers successfully introduce mission critical video applications across their enterprise networks. Since our founding, VBrick has been setting the standard for quality, performance and innovation in the delivery of live and stored video over IP networks—LANs, WANs and the Internet. With thousands of video appliances installed across IP networks worldwide, VBrick is the recognized leader in reliable, high-performance, easy-to-use networked video solutions.

VBrick is an active participant in the development of industry protocols and continues to play an influential role in the Internet Streaming Media Alliance (ISMA), the MPEG Industry Forum, and Internet2. In 1998 VBrick invented and shipped the world's first MPEG Video Network Appliance designed to provide affordable DVD-quality video across the network. Since then, VBrick's video solutions have grown to include Video on Demand, Management, Security and Access Control, Scheduling, and Rich Media Integration. VBrick solutions are successfully supporting a broad variety of applications including distance learning and training, conferencing and remote office communications, security, process monitoring, traffic monitoring, business and news feeds to the desktop, webcasting, corporate communications, collaboration, command and control, and telemedicine. VBrick serves customers in education, government, healthcare, and financial services markets among others.

Contents

Getting Started

1. Introduction	1
How It Works	1
What You Need	2
What's in the Box	2
2. Getting Started	3
Connecting the Camera	3
Connecting the VBrick	4
Setting the IP Address	4
3. Configuring the VBrick	5
Configuring for Unicast	6
Configuring for Multicast	6
Configuring for a Reflector Server	7
4. Installing VBPresenter	8
Configuring VBPresenter	8
Configuring a Web Server	9
5. Uploading a Presentation	10
Launching VBPresenter	10
6. Using the Camera	11
Streaming from the Camera	12
Disabling Demo Mode	12
Recording with the Camera	12

Getting Started

1. Introduction

VBCorpCast represents a breakthrough in multimedia simplicity. The system consists of VBPresenter software, a VBrick WM Appliance, a Sony video camera, and all the accessories, cables, and connectors you need to create cutting-edge multimedia presentations. VBPresenter is a powerful PowerPoint add-in that delivers perfectly synchronized slides along with your live VBrick WM (Windows Media) audio and video. Simply go **LIVE ONLINE** and your audience can instantly view your live multimedia presentation.

▼ Use these simple steps to give a live VBPresenter presentation:

1. Open a PowerPoint presentation.
2. Press the **Upload** icon on the toolbar.
3. Using the e-mail icon on the toolbar, notify your audience via e-mail that a presentation is about to begin.
4. Select **LIVE ONLINE** and navigate through your PowerPoint slides normally in **Slide Show** mode. In addition, you can conduct live audience polls, answer questions, and navigate to web pages. You can also record and publish your presentation for offline viewing.

The VBCorpCast kit includes a VBrick WM Appliance that delivers live audio and video in multiple modes of operation. It also includes a Sony NTSC camera (for use in the United States, Japan, and Canada) with built-in microphone that connects directly to the WM appliance and all the cables, connectors, and instructions to get you on the air in minutes. VBCorpCast uses VBPresenter software which is a sophisticated software application that integrates seamlessly as an add-in for Microsoft PowerPoint and works with your existing network. For scaling and bandwidth management, VBrick has partnered with a leading service provider to give you free web hosting for a limited trial period. See the free web hosting flyer included with the VBrick Appliance for complete details.

Note This *Quick Start Guide* contains detailed technical information and is written for system administrators or others with a solid grasp of networking basics. Do not try to install this product unless you are qualified to do so and contact your system administrator for help.

How It Works

In a nutshell, here's how VBPresenter works:

1. When you upload your PowerPoint presentation, the PowerPoint slides are automatically converted to JPEG format and uploaded to a web server.
2. When you go **LIVE ONLINE** from PowerPoint, the WM Appliance sends a video stream over the network (or to a reflector server) and the video is synchronized with the JPEGs each time you click on a slide.
3. The entire presentation (video stream and slide show) can be recorded and saved for future use.

What You Need

- Windows PC with Microsoft Windows 2000 or Windows XP.
- Microsoft PowerPoint 2000, 2002, or 2003.
- Web server FTP account (Microsoft IIS or equivalent) with read/write privileges. (VBrick has provided a prepaid 60-day account; see the web hosting flyer included with the WM Appliance for details). The web server must support ASP. Microsoft Windows 2003 Server is recommended.
- Internet access to support at least 200 Kbps uplink if you want to deliver your presentation over the Internet.

What's in the Box

Each VBCorpCast kit includes the following components as well as various cables, connectors, accessories, and documents.



Figure 1. VBCorpCast Components

- VBrick WM Appliance (in a separate box) with a WM encoder in Slot 1 and an AC adapter with a separate power cord.
- One Sony *HandyCam* DCR-HC36 Camera Recorder with AC adapter and remote control. A tripod is included separately.
- The camera includes an RCA audio/video cable with red, white, and yellow leads. VBrick provides two 1/8 mini adapters for the red and white RCA connectors; and one BNC adapter for the yellow RCA connector.

- Product Literature envelope with the VBPresenter Product CD and this *VBCorpCast Quick Start Guide*. The Product CD has the VBPresenter software and the *VBPresenter User Guide*.

2. Getting Started

Connecting the Camera

1. Open the box containing the camera and check the components. Review the registration material and take a few minutes to familiarize yourself with the camera.
2. Open the box containing the WM Appliance and check the components.
3. Connect the camera to the WM Appliance (and the appliance to the network) using the supplied cables and adapters as explained below:
 - a. Find the RCA audio/video cable (with three leads) in the Sony box and connect the appropriate adapters to each of the colored leads. As shown in the photo, connect a 1/8 mini adapter to the red and white leads; connect a BNC adapter to the yellow lead.



Figure 2. RCA Cable with Adapters

- b. Connect the red and white cable connectors (with 1/8 mini adapters) to **AUDIO IN LEFT** and **AUDIO IN RIGHT** respectively on the WM Appliance.
- c. Connect the yellow connector (with BNC adapter) to **COMPOSITE IN**.
- d. Connect the other end of the RCA cable to **AV Out** on the camera (see Figure 3).



Figure 3. Connect the RCA Cable to AV Out

- e. Using the **DC IN** receptacle next to the battery, connect the camera to a power source using the AC adapter supplied with the camera.
4. After connecting and configuring the VBrick, turn the camera **ON**. See [Streaming from the Camera](#) on page 12 for more about using the camera.

Connecting the VBrick

1. Connect the VBrick to your local network by connecting the supplied Ethernet cable to the VBrick **ETHERNET** port.
2. Connect a power source to the VBrick **POWER IN 24VDC** using the AC adapter supplied with the VBrick.



Figure 4. VBrick WM Appliance – Rear view

Setting the IP Address

If you are connected to a network that supports DHCP, the VBrick will automatically be configured with an IP address after a few moments (this is similar to what happens when you plug your computer into any network). The front panel will cycle and display the VBrick's IP address. *Write down the IP address.* If your network does not support DHCP, the VBrick will default to **172.17.5.5**. It is always a good idea to change this default IP

address to a fixed IP address. Dynamic IP addresses can change over time and it's easier to manage your VBrick if you know the IP address. You can get a new IP address from your system administrator and enter it using the steps explained in [Configuring for Unicast](#) on page 6.

Note If your network is *not* DHCP-enabled, you will get a message indicating the device is searching for a DHCP server. When this routine completes, the VBrick defaults to 172.17.5.5. If the VBrick is on the same subnet, you can configure a different IP address from the PC you are working on; if not on the same subnet, you can use the handheld IR remote control to do so. See the *WM Appliance Admin Guide* for details.



Figure 5. VBrick WM Appliance – Front view

After you set the IP address, open the Windows Media Player on your computer. Then go to **File > Open URL** and enter <http://yourVBrickIpAddress:8080/vbrickvideo1>. You will see and hear live video audio (delayed by about 5 seconds) streaming from the camera. *You have now verified that the appliance, camera, microphone, and network are operational.* But you are not done. Before you can deliver a presentation you still need to configure the WM Appliance, install the VBPresenter software, and upload a PowerPoint presentation.

3. Configuring the VBrick

Your next step depends on how you plan to deliver the presentation. All three of the following operating modes can be configured to run concurrently although in some cases you will use just one. See "Typical Configurations" in the *VBPresenter User Guide* for more information about each mode.

- [Configuring for Unicast](#) – sends a discrete stream to each end user directly from the VBrick.
- [Configuring for Multicast](#) – sends one stream to a network switch or router which replicates it for multiple end users on your internal LAN network.
- [Configuring for a Reflector Server](#) – sends one stream to a reflector server which replicates it for an unlimited number of end users on the Internet.

Configuring for Unicast

When configuring the VBrick for unicast as a primary streaming server, your WM Appliance will typically require a fixed IP address. You will also need to set the subnet mask and gateway IP address. *These values must be provided by your system administrator.*

- ▼ To configure the VBrick for unicast:
 1. Login to your WM Appliance by entering <http://yourVBrickIpAddress> in your browser. The default username/password for the Login Page is [admin/admin](#).
 2. On the menu bar in the IWS application, go to **Configuration > Network** window and click **Begin Edit**.
 3. Enter the values provided by your system administrator for **IP Address**, **Subnet Mask**, **Gateway IP Address**, and **VBrick Host Name**. (You must set **Network DHCP** to **Disabled** to do this.)
 4. When done, click **Save Config, End Edit**, and exit the application.

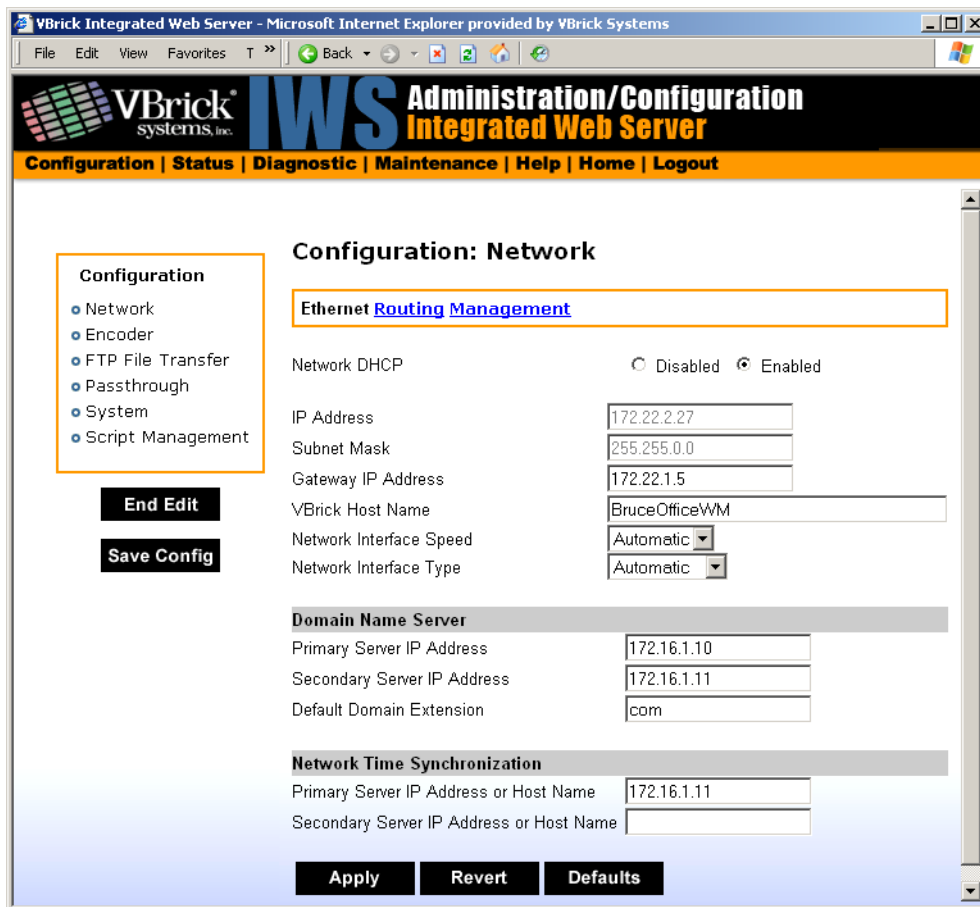


Figure 6. IWS > Configuration > Network

Configuring for Multicast

If your local network supports multicast, you can reach everyone in your building or campus network without using excessive bandwidth by configuring for multicast.

- ▼ To configure the VBrick for multicast:
 1. Login to your VBrick by entering <http://yourVBrickIpAddress> in your browser. The default username/password for the Login Page is [admin/admin](#).
 2. Navigate to **Configuration > Encoder > Multicast** and click **Begin Edit**.
 3. For the **Multicast Destination IP Address**, enter the multicast address you received from your system administrator, for example **239.1.1.1**.
 4. Click **Save Config** and **End Edit** when done.

Configuring for a Reflector Server

If you don't have sufficient bandwidth to support multiple Internet viewers, or if you want to reach the Internet from behind a firewall, you will want to use a reflector server. A reflector server can replicate one stream for hundreds or thousands of viewers. Using a reflector server, you can stream from your office or home to an unlimited number of viewers, even though you are behind a firewall and have limited bandwidth.

- ▼ To configure the VBrick for a reflector server:
 1. Login to your VBrick by entering <http://yourVBrickIpAddress> in your browser. The default username/password for the Login Page is [admin/admin](#).
 2. In IWS, navigate to **Configuration > Encoder > Server**. Enable **Push To Server** and set the **HTTP Push To Server** parameters to match your reflector server (see below) using the information provided by your web hosting provider.
 3. When done, click **Save Config**, **End Edit**, and exit the application.



Figure 7. IWS > Configuration > Encoder > Server

Note Use the information provided by your web hosting provider to complete the following fields in **HTTP Push To Server -- Slot1**. *Leave the other fields in this section blank or at the defaults.*

Server Name Or IP Address	Server name or IP address of push destination.
Publishing Point/ Mount Point	Sets the name of the publishing point to accept the push.
User Name	User name for push authentication.
Password	Password for push authentication.

4. Installing VBPresenter

- ▼ To install VBPresenter:
 1. Insert the VBPresenter Product CD in your Windows 2000 or Windows XP computer.
 2. Navigate to the "VBPresenter Software" page and click on **VBPresenter vx.x Setup.exe**.
 3. Follow the online instructions (or see the "Software Installation" instructions in the *VBPresenter User Guide*). You do not have to restart the computer when done.
 4. When the installation is complete, verify that the VBPresenter toolbar is shown in PowerPoint. If it is not visible, go to **View > Toolbars** and check **VBrick VBPresenter**. If the **VBrick VBPresenter** toolbar is not shown as an option, you will most likely need to re-install the software.



Figure 8. VBPresenter Toolbar

Configuring VBPresenter

On the VBPresenter toolbar, click the **VBPresenter Setup** icon on the far left to launch the configuration window shown below. Enter the **FTP/Web Server** values provided by your system administrator (or web hosting provider) only for the fields shown below. In the **FTP/Web Server** section, click the **Manage** button to open the FTP directory for the specified **IP or Host**. In the **VBrick Appliance** section, click the **Manage** button to open the Integrated Web Server (IWS) interface for the appliance.


Note If you have trouble configuring VBPresenter, or need more information, click the help  icon on the toolbar to launch the online help system.

Figure 9. VBPresenter Configuration

Configuring a Web Server

You need a web server to host your PowerPoint slides and recorded presentations. You can use any of the following as a web server for VBPresenter and each is configured differently.

- Local web server – use any local web server, e.g. iPlanet, WebSphere, IIS, Apache, etc.
- VBStar – use a local MPEG-2 or a WM VBStar network appliance with a hard drive.
- ETV Portal Server – use the web server included with the Portal Server.
- Reflector server – use the web server provided by a web hosting provider.

FTP/Web Server

The values in this section differ depending on your web server. When completing this section, please refer to "Choosing a Web Server" in the VBPresenter online help for detailed information about the configuration settings for each web server.

IP or Host	The IP address or host name of your web server.
Username	FTP account username.
Password	FTP account password.
Rmt Dir	Remote directory. Typically the same as your Username but may be different.
URL	The URL to view the web pages on your server. Typically http://servername/remotedirectory

VBrick Appliance

Get these values from the IWS configuration pages for the VBrick. Click on the **Manage** button to open the IWS Login page for the appliance specified in the **IP or Host** field.

VBrick IP	In IWS, go to Configuration > Network for this information.
Username	In IWS, go to Maintenance > Change Users Names & Passwords . The default username/password is admin/admin .
Password	In IWS, go to Maintenance > Change Users Names & Passwords . The default username/password is admin/admin .

Video Viewing URL

For unicast or multicast, get this value from the IWS configuration page for the VBrick. Go to **Configuration: Encoder > Server > HTTP URL**. This is the URL of the VBrick server streaming the video, for example <http://VBrickIpAddress:8080/vbrickvideo1>. It can also be the URL of a reflector server, in which case you will get this value from your web hosting provider.

Video Recording URL

Used to record the stream from a URL *other than* the **Video Viewing URL**. For example you may want to *record* the stream directly from the VBrick rather than from a reflector server.

5. Uploading a Presentation

The final step is to upload a PowerPoint presentation and go **LIVE ONLINE** in VBPresenter. This launches your PowerPoint presentation with live streaming video as shown in Figure 10. This step verifies that all the components are successfully installed, configured, and working.

- ▼ To upload a PowerPoint presentation:
 1. Open PowerPoint and launch the PowerPoint presentation you want to upload.
 2. Click the **Upload Now** icon (second from left) to upload your PowerPoint presentation to the web server you configured in VBPresenter. (Note that if you are using a reflector server, an upload can take 15 minutes or more depending on your service provider.)
 3. Click the e-mail icon to notify viewers they are invited to view a live multimedia presentation. Modify the e-mail to indicate when the presentation will begin.

Launching VBPresenter

- ▼ To launch VBPresenter after you have uploaded your slides and notified your viewers:
 1. In PowerPoint, click **LIVE ONLINE** on the VBPresenter toolbar and confirm.
 2. Launch the VBPresenter window by clicking the e-mail icon and selecting a URL.
 3. When the VBPresenter window opens, wait a few moments until buffering completes and the video begins to stream.
 4. **Go to PowerPoint, quickly click the second slide and then the first to launch your slides in the VBPresenter window.** (The PowerPoint slides are only displayed when the slide changes. For this reason a new viewer will not see any slides until the slide changes.)

Speak directly to the camera during the presentation. *Rotate the touch screen panel completely around (see Figure 1) so you can see (and center) your own image while streaming.* See "Creating Effective Presentations" in the VBPresenter online help for more information; see the "Troubleshooting" pages if you need help.

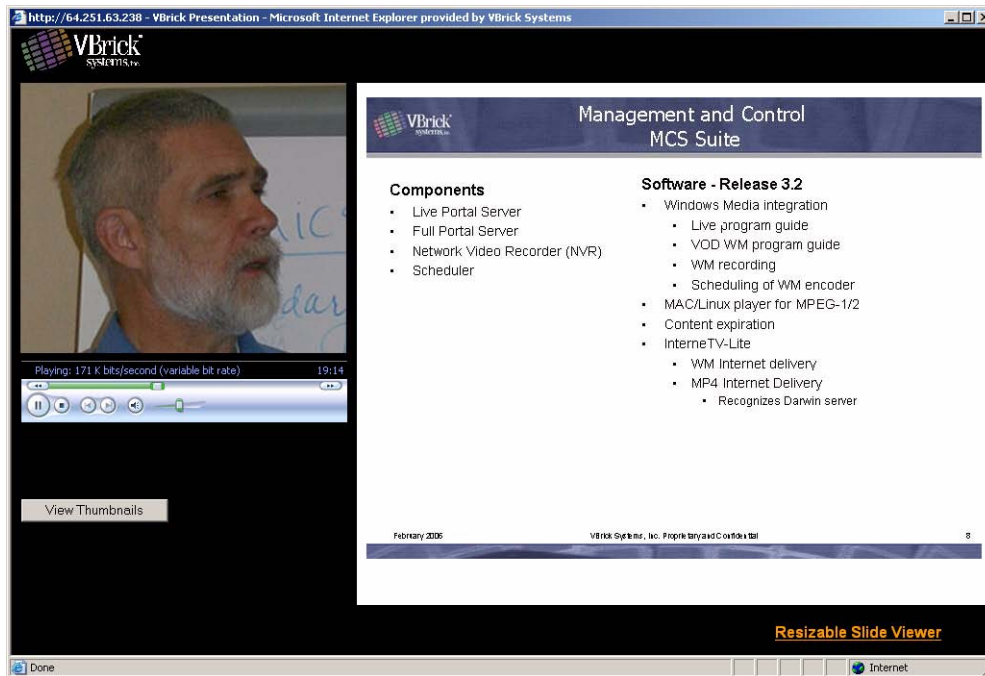


Figure 10. VBPresenter Live Online

Note When viewing a recorded presentation, you can use the thumbnails to navigate through the presentation. (Thumbnails are not available during a live presentation and the **View Thumbnails** button is not shown.)
Use the **Resizable Slide Viewer** to open the current slide in a new window.

6. Using the Camera

Each VBCorpCast kit includes a Sony *HandyCam* DCR-HC36 Digital Video Camera Recorder, a tripod, and other cables and components. See the *HandyCam Operating Guide* that is included with the camera for detailed instructions that explain how to use the camera.



Figure 11. Sony *HandyCam* DCR-HC36

Note The camera has a built-in battery but must be plugged into a power source using the AC adapter supplied with the camera. If you are in **STBY** mode and it's not plugged in, the camera will shutdown after it's been idle for about five minutes if you are not recording to tape.

Streaming from the Camera

Connect the camera to a power source using the AC adapter and turn the camera **ON** to begin streaming. With the camera on in **STBY** mode, it will automatically stream video through the VBrick to the configured destination when you select **LIVE ONLINE** in VBPresenter. (*Be sure to disable Demo mode as explained below.*) In **REC** mode, the camera streams video *and* records to a mini DV cassette at the same time. Turn camera **OFF** to stop streaming. In VBPresenter you can simply go **OFFLINE** to end a multimedia presentation.

Disabling Demo Mode

If there is no mini DV tape in the camera and you are streaming in **STBY** mode, the camera will automatically go into **DEMO** mode (and display a list of features) after a few minutes. To avoid having this interrupt your presentation, you should disable **DEMO** mode using the touch screen panel *before* you start a presentation.



Figure 12. Touch Screen Panel

- ▼ To disable demo mode:
 1. Power on the camera and open the touch screen LCD panel.
 2. In the lower-right corner of the screen, press **P-MENU**.
 3. Press **MENU** and (using the arrow icons) page up or down to **PICT. APPL.** and press **OK**.
 4. Page up or down to **DEMO MODE**.
 5. Press **DEMO MODE**, set to **OFF** and press **OK**.

Recording with the Camera

During normal operation the camera streams video in **STBY** mode through the VBrick to your network or over the public Internet. In order to save a backup copy of the video, you can record it to a mini DV tape while you are streaming. (Do not confuse this backup method with the recording functionality in VBPresenter. When you press **Record START** in VBPresenter, the entire presentation is digitized and saved as a **wmv** Windows Media file.)

- ▼ To record a stream to tape:
 1. Open the tape compartment on the camera and insert a mini DV tape.
 2. Turn the camera **ON** and begin streaming.



Figure 13. Loading a Mini DV Tape

3. Press **REC START/STOP** to start recording; press **REC START/STOP** again to stop recording.
- ▼ To playback a previously recorded stream.
 1. Power on the camera.
 2. Insert the previously recorded mini DV in the camera.
 3. Connect the RCA audio/video cable to **AV Out** on the camera.
 4. Connect the yellow RCA connector (with BNC adapter) to **COMPOSITE IN** on the VBrick.
 5. Set camera **MODE** to **PLAY/EDIT**.
 6. Press the **Rewind** icon (see *HandyCam Operating Guide*) on the touch screen panel to rewind the mini DV tape.
 7. Press the **Play/Pause** icon on the touch screen panel to start streaming the mini DV tape through the VBrick. You can also view the video on the touch screen as it streams.

We hope this guide has been helpful and thank you for choosing VBrick Systems. At VBrick we are committed to providing leading-edge streaming media solutions for customers in a wide variety of industries including education, government, healthcare, and financial services. If you want more information about our products, or need help deciding how streaming media can benefit you, call us toll-free at 866-827-4251 (USA only) or visit our website at www.VBrick.com.





VBrick Systems, Inc.
12 Beaumont Road
Wallingford, Connecticut 06492, USA