



VBrick Video Buddy™ Quick Reference

The VBrick Lync 2013 Streaming Gateway combines the power of video to every desktop with the real-time collaboration capability of instant messaging. With a Lync Streaming Gateway you can view video from within Microsoft Lync or from any Lync-enabled application. Within Microsoft Lync, you can see the availability and current program titles of always-on video content and click on any stream to watch.

| | |
|--------------------------------------|---|
| What's a Video Buddy? | 1 |
| Adding a Video Buddy | 1 |
| Playing a Video Buddy | 2 |
| Sharing a Video Buddy | 4 |
| Adding Groups of Video Buddies | 6 |
| Adding the VBrick Videos Group | 6 |
| Receiving a Video Alert | 7 |


What's a Video Buddy?

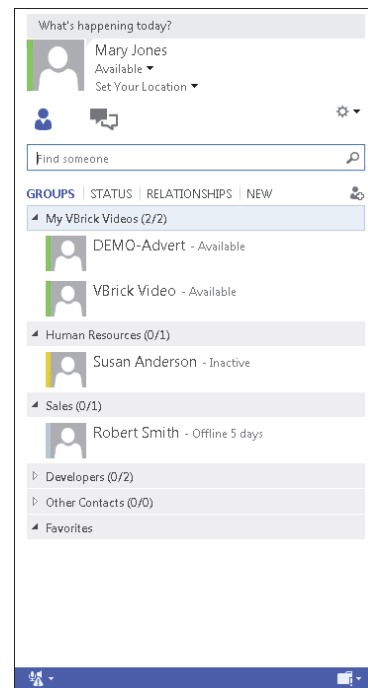
A Video Buddy is a live video stream. VBrick's Lync Streaming Gateway enables users to access live video feeds from within their Microsoft Lync client by clicking on a Video Buddy. Video Buddies appear as Lync "presence" icons in Microsoft's Lync client and can be added manually or pushed to Lync client desktops via an Active Directory distribution list. The image on the right shows a Microsoft Lync client with Live Video Buddies

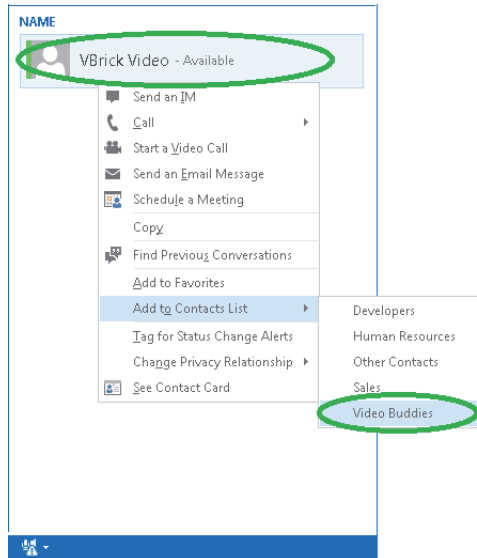
Users simply right-click on any Video Buddy to open an instant messaging session. The new Lync page will automatically expand the window and load the VBrick video player with the selected video stream.

Adding a Video Buddy

Streaming video buddies are initially configured on the VBrick server by a system administrator. Once configured, you can add them to your Microsoft Lync client application as follows:

- ▼ To add video buddies to Microsoft Lync:
 1. Open Microsoft Lync on your desktop.
 2. Type `vbrick` in the search field and wait a few seconds.
 3. Mouseover the desired Video Buddy and click the  icon (Add to Contacts).



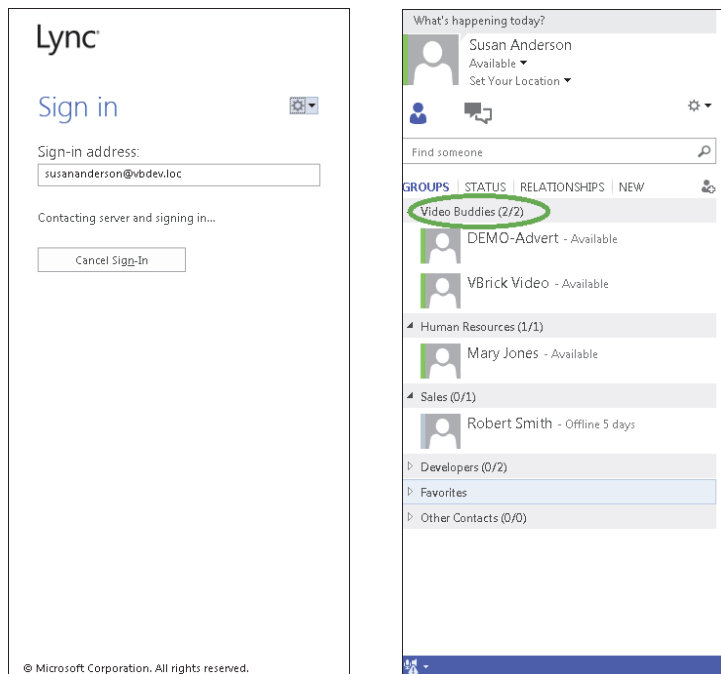


4. Add the Video Buddy to an existing group (for example Sales) or to a new group.

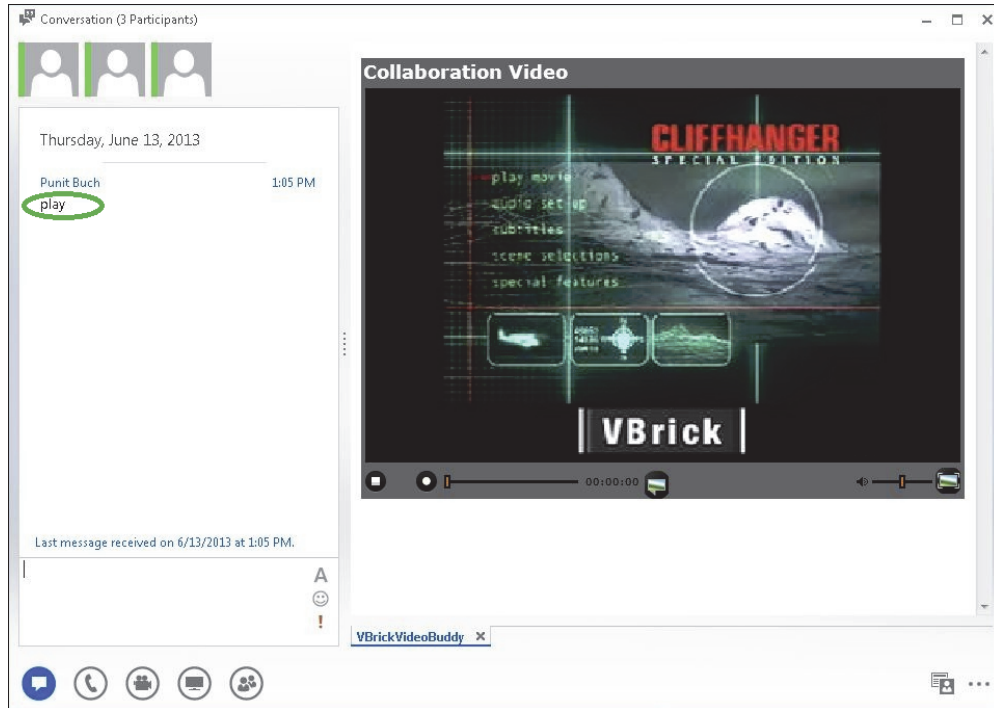
Playing a Video Buddy

▼ To launch Microsoft Lync:

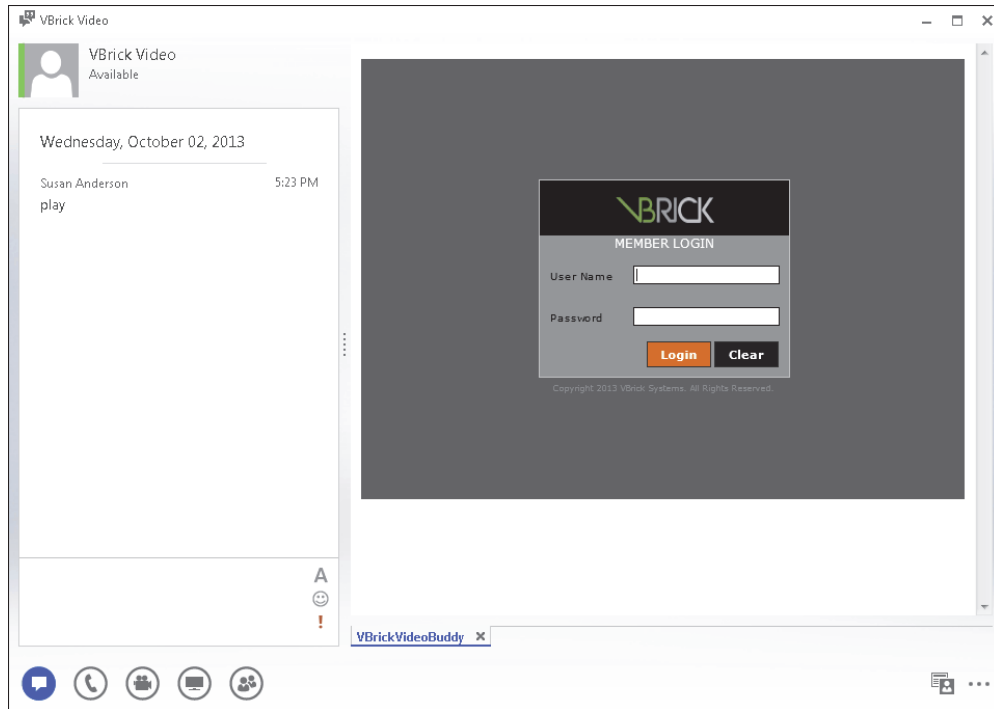
1. Go to **Start > Microsoft Lync > Microsoft Lync 2010**.



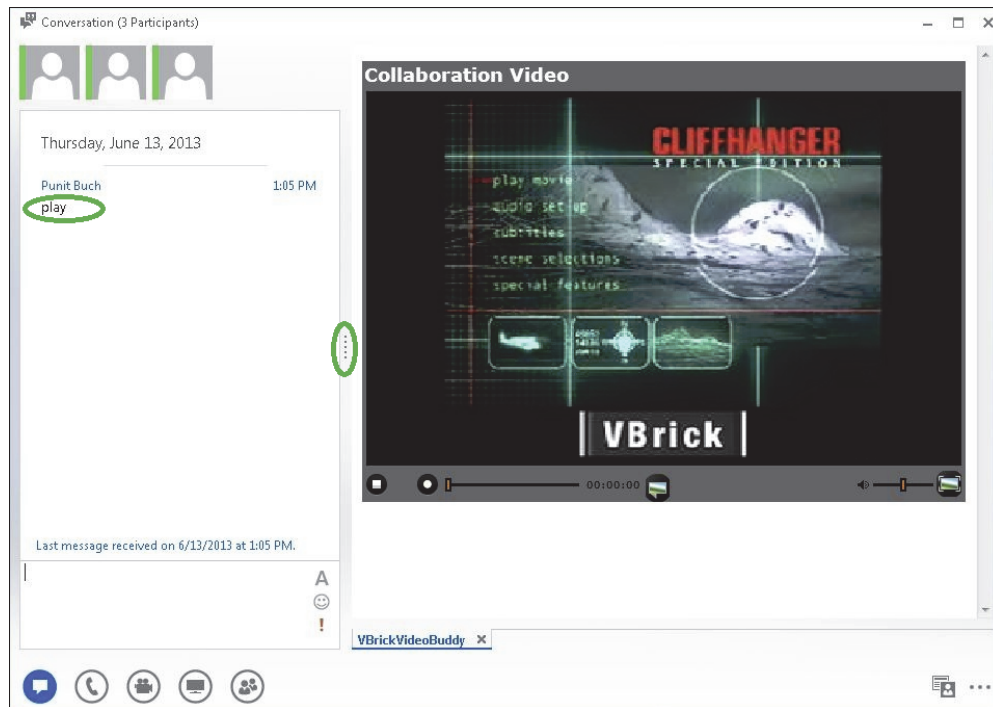
2. Login with a valid sign-in address to display your Microsoft Lync home page.
3. Click on **VBrick Videos** to display all available Video Buddies.
4. Double-click on any Video Buddy to launch the stream. If your desktop has been configured by an administrator with specific VBrick components, the stream will auto-launch in a new window—although you may still be prompted for a User Name and Password.
5. If not configured with VBrick components, the following page will display with a "chat" window on the left.



6. Type **play** in the text box and press **Enter**. If authentication is enabled and you are not already logged in, you will need to login to the VEMS (VBrick Enterprise Media) Server.



7. If prompted with the screen shown above, login to the VEMS server with a valid user name and password and the stream will launch in a separate window on the right.



8. Click the arrow icon to the left of the player window (see above) to collapse the chat window and display only the stream.



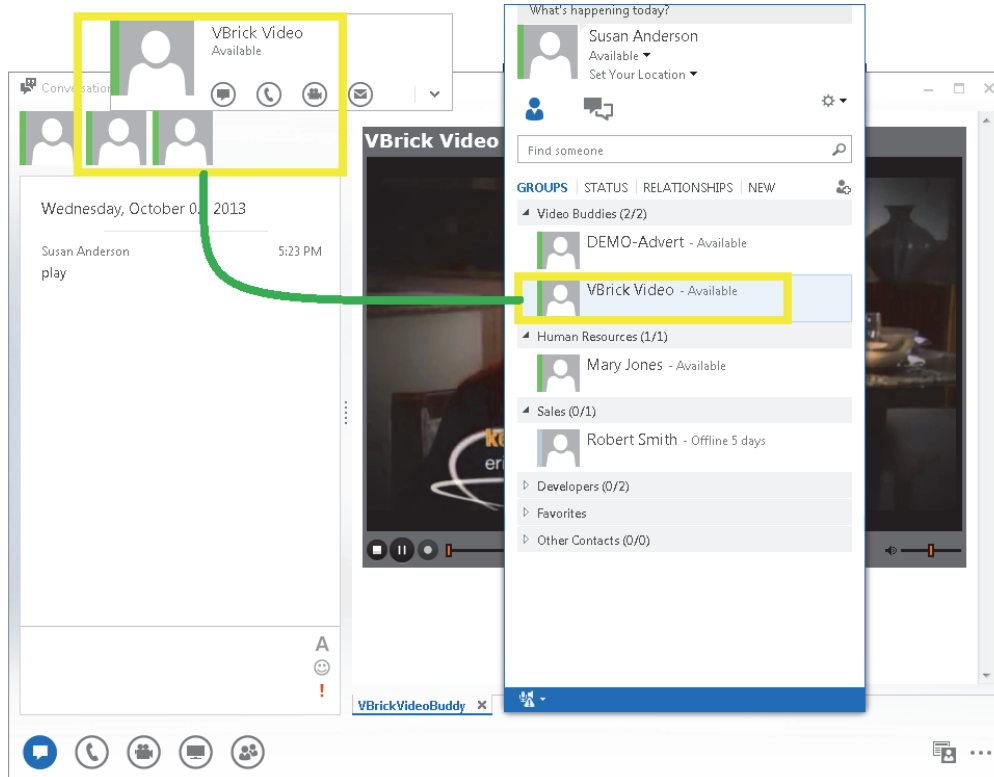
9. Use the available player controls to Stop, Start, Pause, etc.

Sharing a Video Buddy

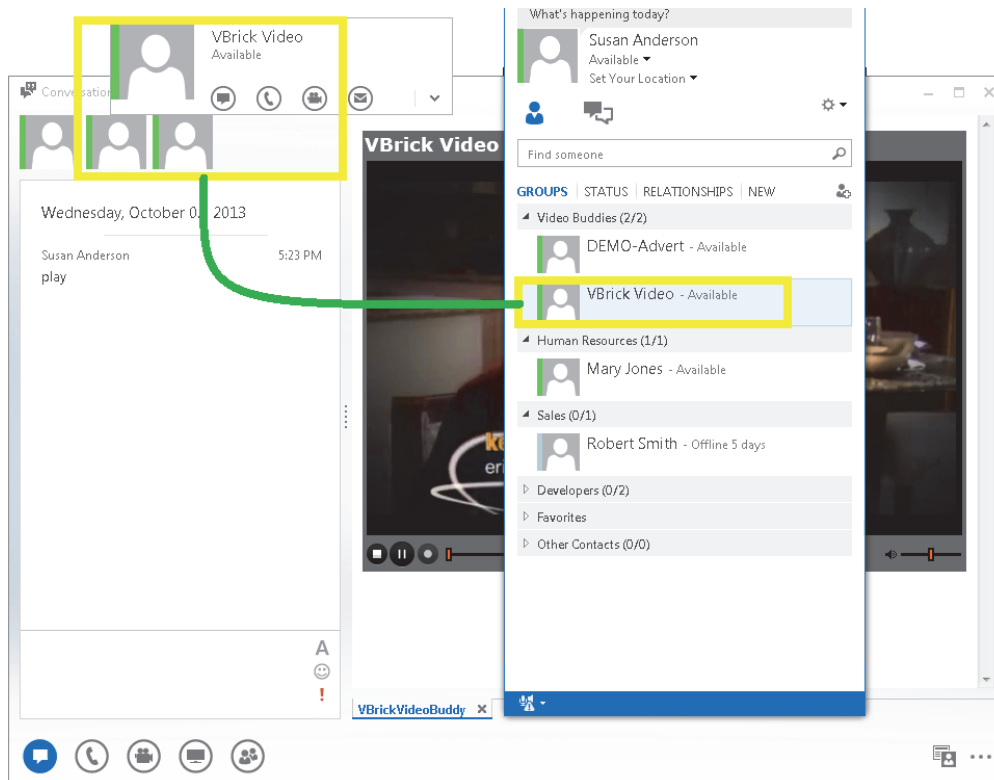
There are two ways to share a Video Buddy. The first method is to play a video and drag a *contact* into the chat window. The second method is to launch a conversation and drag a *video* into the chat window.

▼ To share a Video Buddy:

1. Method 1: Play a video and drag a contact into the chat window. The contact user will get a popup invitation to a conference and the video will automatically play in their Microsoft Lync client once they accept the invitation.



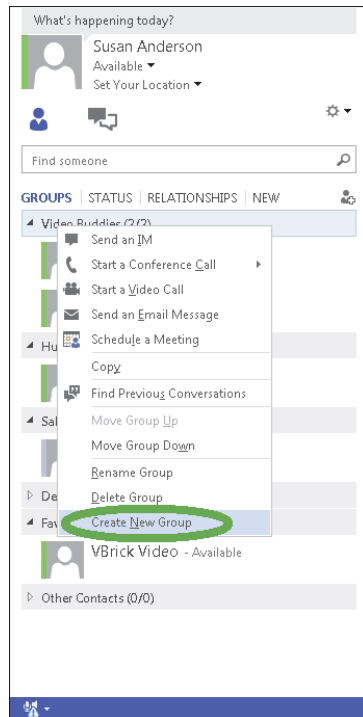
2. Method 2: Launch a conversation and drag a video into the chat window. The video will automatically play in their Microsoft Lync client once they accept the invitation.



Adding Groups of Video Buddies

Sometimes it's helpful to arrange your Video Buddies into groups.

- ▼ To add groups of video buddies to your home page:
 1. Click on the **Show menu** icon in the upper-left corner of the page.
 2. Navigate to **Tools > Create New Group**.

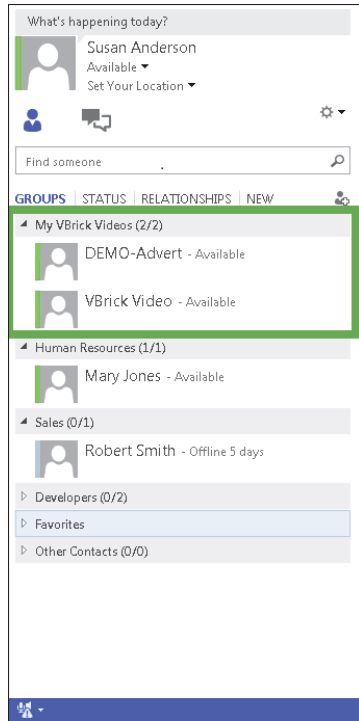


3. Enter a user-friendly name for the group.
4. Once you have added a group, you can right-click on the group name to move up, down, rename, delete, etc.

Adding the VBrick Videos Group

Use the following steps to quickly add the preconfigured **VBrick Videos** group to your Lync client. This group will contain all VBrick streams that are currently available.

- ▼ To add the VBrick Videos group:
 1. Type **vbrick** in search field and wait a few seconds. This will automatically add the **VBrick Videos** group to your Lync client.
 2. Mouseover the **VBrick Videos** group and click once on the **+** icon.
 3. This will automatically populate **VBrick Videos** (see below) with all available VBrick video streams. Note that the contents of the **VBrick Videos** group are updated by the Lync Streaming Gateway server once per day. This means that in most cases, changes to the list of Video Buddies will not be displayed until the next day.



Receiving a Video Alert

When an administrator sends a Video Alert with an important video message such as an impending weather event, Lync users will see a "toast" pop up in the bottom right corner of their screen. To play the video, you simply click on the toast. Once opened, the Video Alert works just like any other Video Buddy and you can add other users to the conversation, or use the available player controls to Start, Stop, Pause, etc.

